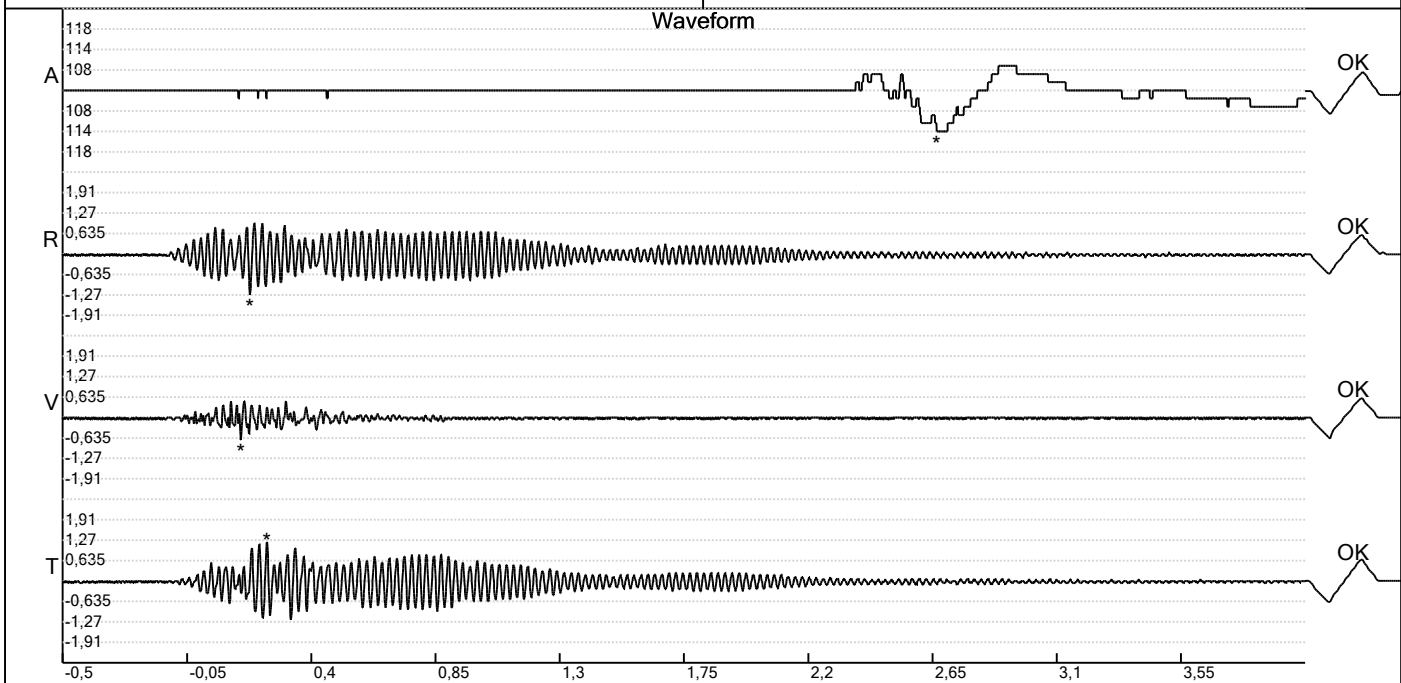


Carrière de BRS
 Aywaille -5
 Tir du 12/09/2022
 Sismographe placé au
 261 Halleux
 4710 Comblain-au-Pont

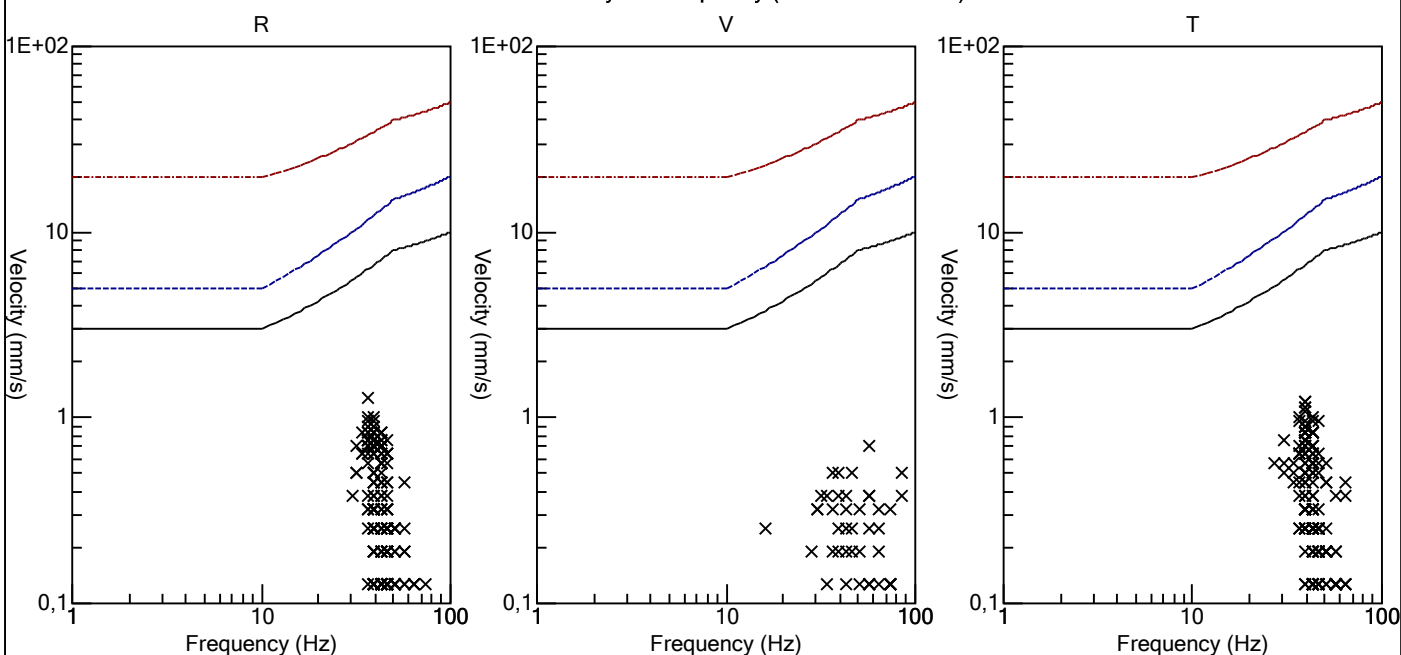
Record: 1789202209121501329.dtb
 Number: 329
 Seismograph: Mini-Seis 1789
 Type of Record: Waveform
 Date: 12-09-22 15:01:00
 Duration: 4,50 Seconds
 Sample Rate: 1024
 Pre-Trigger: 0,5 Seconds
 Seismic Trigger: 0,508 mm/s
 Acoustic Trigger: 142,1 dB
 Seismic Gain: 63,5
 Acoustic Gain: 141,9 dB
 Voltage: 6,5

Peaks and Frequencies
 PPV Maximum (Geo #1): 1,27 mm/s
 Acoustic #1: 114,0 dB @ 2,3 Hz (2,665039 s)
 Radial #1: 1,27 mm/s @ 36,5 Hz (0,1777344 s)
 Vertical #1: 0,699 mm/s @ 56,8 Hz (0,1445313 s)
 Transverse #1: 1,21 mm/s @ 39,3 Hz (0,2392578 s)
 Last Calibration Date: 03-12-21

Graph Information
 Time Range: -0,5 s to 4 s, Intervals: 0,4500 Seconds



Velocity vs. Frequency (DIN 4150-3 Tab 1)

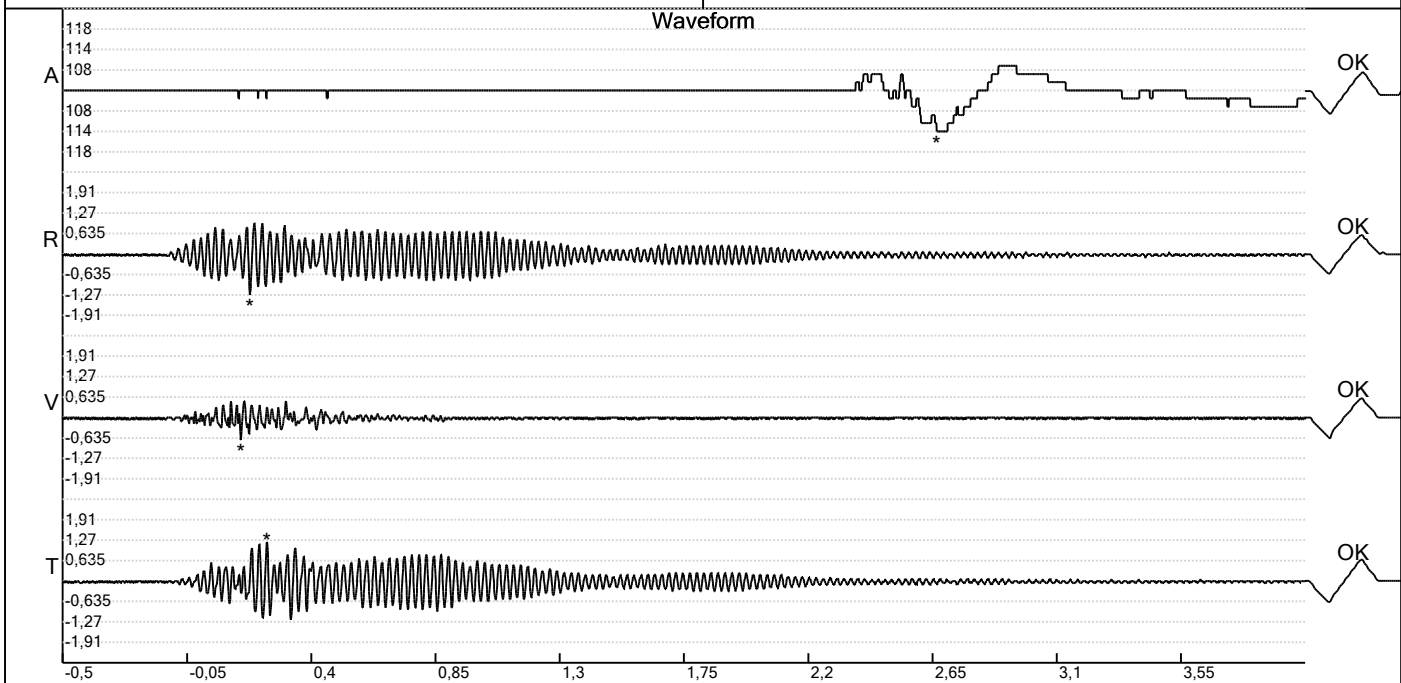


Carrière de BRS
 Aywaille -5
 Tir du 12/09/2022
 Sismographe placé au
 261 Halleux
 4710 Comblain-au-Pont

Record: 1789202209121501329.dtb
 Number: 329
 Seismograph: Mini-Seis 1789
 Type of Record: Waveform
 Date: 12-09-22 15:01:00
 Duration: 4,50 Seconds
 Sample Rate: 1024
 Pre-Trigger: 0,5 Seconds
 Seismic Trigger: 0,508 mm/s
 Acoustic Trigger: 142,1 dB
 Seismic Gain: 63,5
 Acoustic Gain: 141,9 dB
 Voltage: 6,5

Peaks and Frequencies
 PPV Maximum (Geo #1): 1,27 mm/s
 Acoustic #1: 114,0 dB @ 2,3 Hz (2,665039 s)
 Radial #1: 1,27 mm/s @ 36,5 Hz (0,1777344 s)
 Vertical #1: 0,699 mm/s @ 56,8 Hz (0,1445313 s)
 Transverse #1: 1,21 mm/s @ 39,3 Hz (0,2392578 s)
 Last Calibration Date: 03-12-21

Graph Information
 Time Range: -0,5 s to 4 s, Intervals: 0,4500 Seconds



Fast Fourier Transform (Amplitude Spectrum)

